

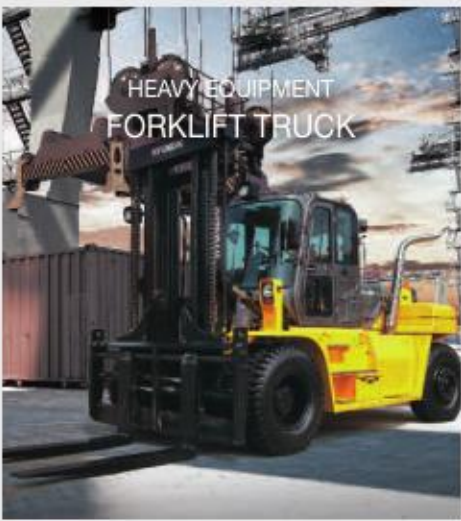
[www.dpcjoint.co.kr](http://www.dpcjoint.co.kr)

# DPC

DONGWOO PRECISION CO.,LTD



# PROPELLER SHAFT ASSEMBLY





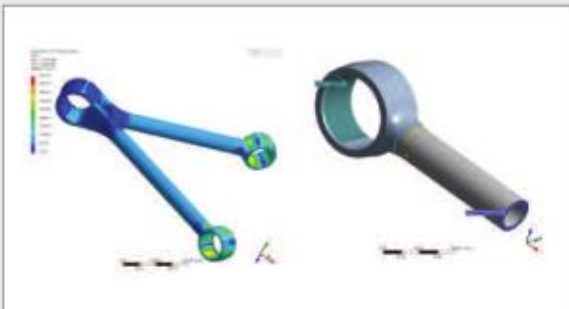
VEHICLES  
BUS



VEHICLES  
TRUCK



## | TORQUE ROD ASSEMBLY |

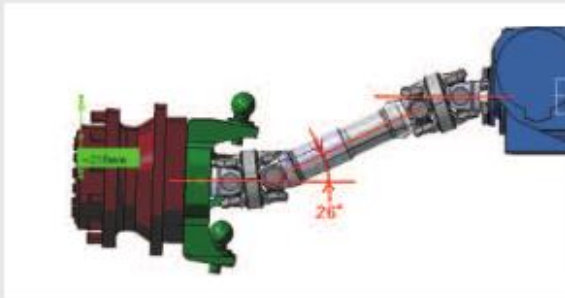
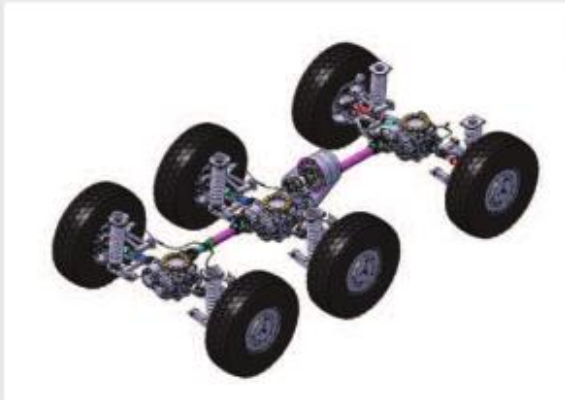


## | PROPELLER SHAFT ASSEMBLY |





## PROPELLER SHAFT ASSEMBLY



## AXLE SHAFT ASSEMBLY

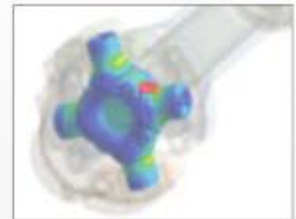


## COMPANY HISTORY

- 1991. 08.10 Factory Establishment
- 1998. 07.15 Korean Industrial Property Office registration of trademark (DPC)
- 2004. 10.01 Technical research institute establishment
- 2005. 02.22 Innovative small and medium enterprises (INNO-BIZ) Selected
- 2012. 11.16 Minister of Knowledge Economy citation awarded
- 12.01 The Small and Medium Industry Promotion Corporation an enterprise selection number one
- 2013. 05.20 Excellent Company Designation Busan
- 2015. 08.01 The Factory Relocatim Yangsan

## CUSTOMER & REGISTRATION

- 1995. 06.20 Korea Auto Industries Coop. Association Company registration
- 2000. 08.14 Tata Daewoo Commercial Vehicle Co.,Ltd Company registration
- 2001. 01.05 Hyun-Dae Heavy Industries Company registration
- 01.18 Volvo Company registration
- 2003. 05.29 Daewoo Bus Co.,Ltd Company registration
- 2008. 12.01 CLARK MHC Co.,Ltd Company registration
- 2011. 08.24 Hanwha-defensesystems Co.,Ltd Company registration
- 08.30 Doosan Forklifts Co.,Ltd Company registration
- 2017. 01.01 Doosan Infracore Company registration



**DPC** DONGWOO PRECISION CO.,LTD

94-17, Sanmakgongdannam 14-gil, Yangsan-si, Gyeongsangnam-do, Korea

Tel : 82-51-831-2201 / 82-55-912-2203 Fax : 82-51-831-2204 / 82-55-912-2207

Website : [www.dpcjoint.co.kr](http://www.dpcjoint.co.kr) E-mail : [dpc\\_sales01@dpcjoint.co.kr](mailto:dpc_sales01@dpcjoint.co.kr)